

F&M CUSTOM COWLINGS

www.CustomCowlings.com

INSTALL INSTRUCTIONS FOR 525 EFI / 600 SCI COOLANT TANK / FILL CAP



1. (Shift Linkage)
Remove two top bolts and loosen bottom bolt, using 7/16" socket and set to the side.



2. Remove shift linkage mounting plate using 7/16" socket.



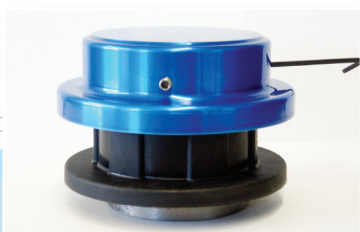
3. Remove manifold sensor using 3/8" wrench and set aside.



4. Remove three bolts holding tank using 7/16" socket.



5. Carefully slide tank cover into position and remove PVC protector. Bolt down tank and install sensor and shift linkage.



6. Slide fill cap into fill cap cover as shown and tighten set screws with wrench provided.